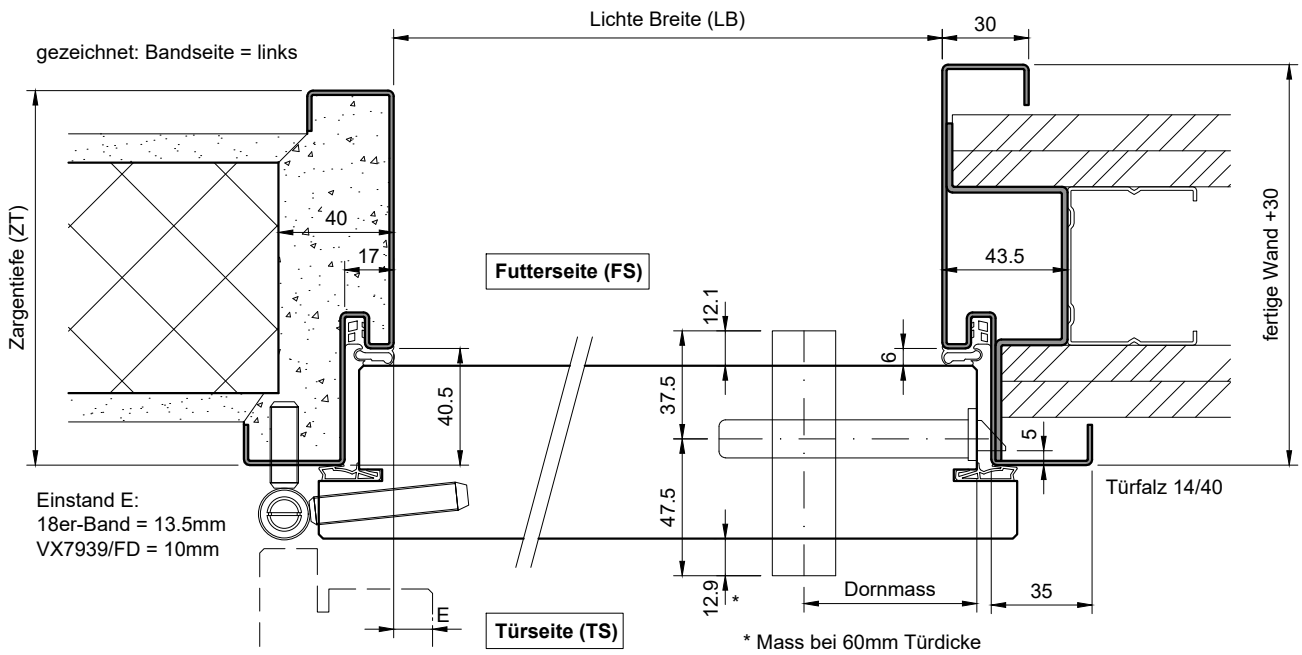
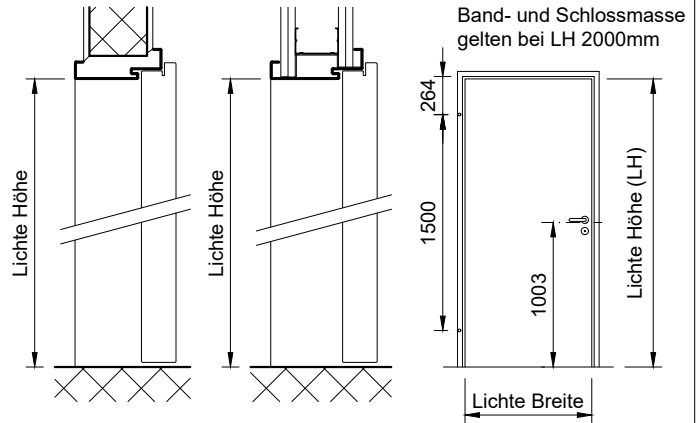
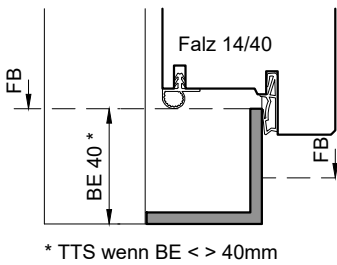


Stahl-Umfassungszarge Typ TTD40 auf MBW oder LBW, aus 1.5 mm elektrolytisch verzinktem Stahlblech, Ecken auf Gehrung.

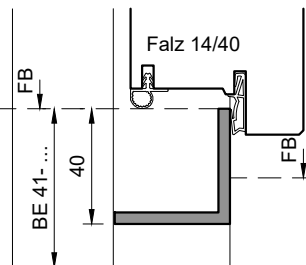
Kombinierbar mit Türen von 58-61mm Dicke:	
diverse	Fremdprodukte, ca. 60mm



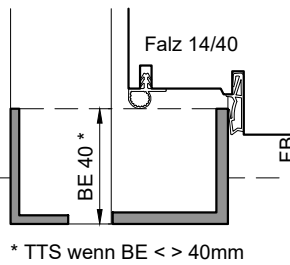
Typ: TT40S
(Schwellenwinkel)



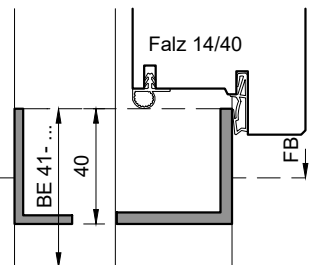
Typ: TT40S
(Schwellenwinkel)



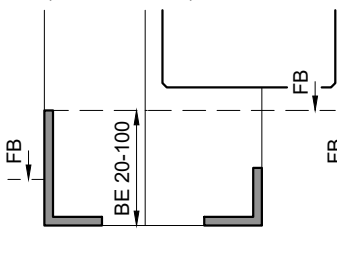
Typ: TT40S+S
(Doppelschwelle)



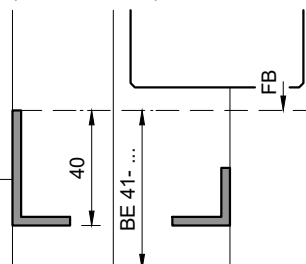
Typ: TT40S+S
(Doppelschwelle)



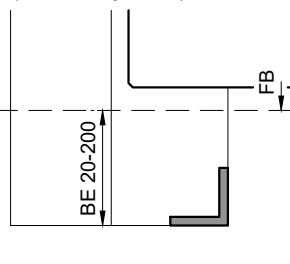
Typ: S (auf FS)
(Konterschwelle)



Typ: S (auf FS)
(Konterschwelle)



Typ: V
(Verbindungseisen)



Typ: VP
(prov. Verbindungseisen)

