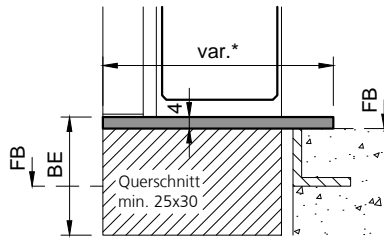
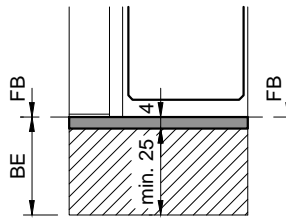


**Typ: KSA.B**  
(Alu-Konter-Umbauschwelle)

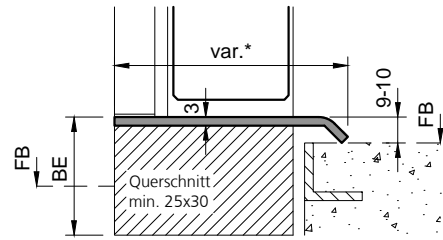


\* Standard 60/80/100

**Typ: KSA.B**  
(Alu-Konter-Schwelle)  
Breite = Rahmendicke

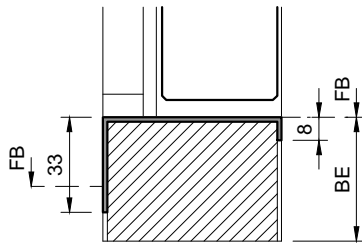


**Typ: KSR.B**  
(Alu-Konter-Umbauschwelle)



\* Standard 65/75/85/100

**Typ: KSP.B (Sonderanfertigung)**  
(Konter-Abdeckprofil)  
CrNi-Stahl/verzinkt/einbrennlackiert  
Breite = Rahmendicke



**Typ: SP25**  
(Abdeckprofil)  
CrNi-Stahl/verzinkt/einbrennlackiert

