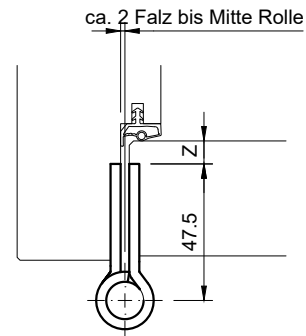
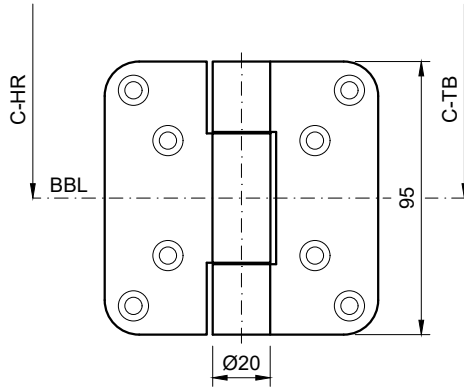
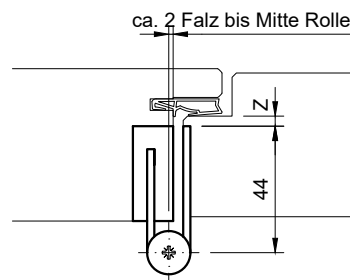
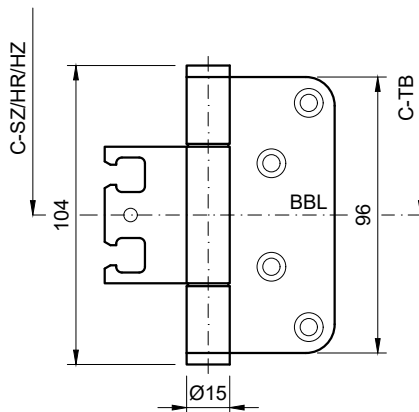


VN2929/100 (HR)
 matt vernickelt oder Edelstahl matt



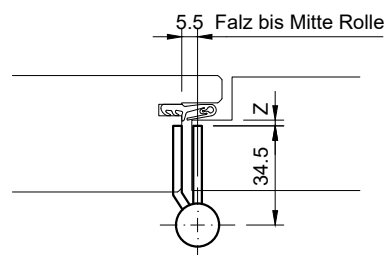
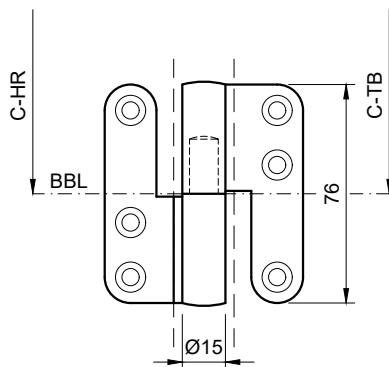
Blockfutter-Breite: min. 40mm

V7888 (SZ/HR/HZ)
 matt vernickelt oder Edelstahl matt
 (Bandaufnahme: vernickelt)



Blockfutter-Breite: min. 45mm

ST 215 GL-18 (HR) spez.! nur Rahmentyp RDS14-31
 Edelstahl
 Stiftteil unten (im HR), Lochteil oben (im TB)
 (Hersteller: Stiftteil oben/Lochteil unten)



SZ = Stahlzargen, HR = Holzrahmen, HZ = Holzargen