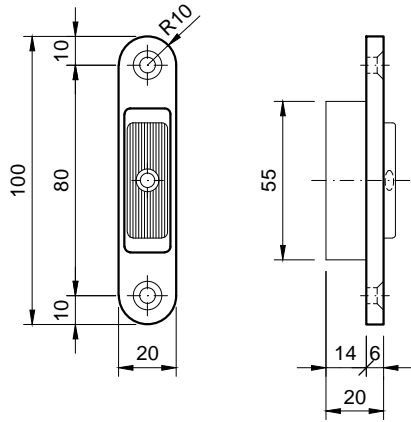
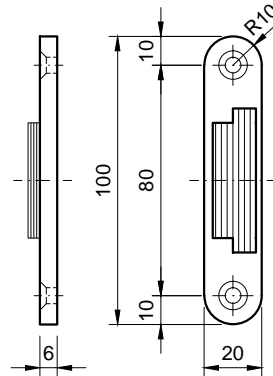


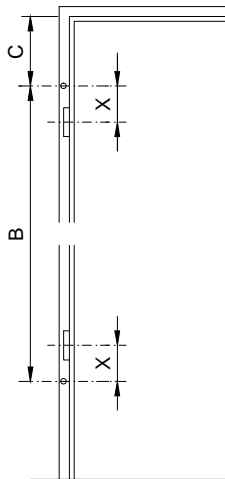
**KfV 8042 (in SZ/HR)**



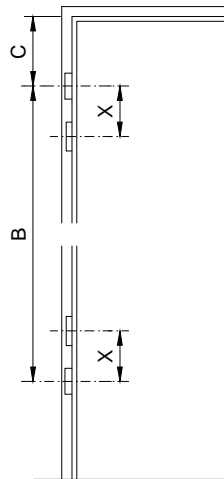
**KfV 8041 (in Türblatt)**



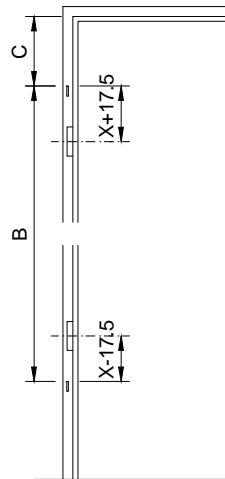
**M10/M12, HR 16-2**



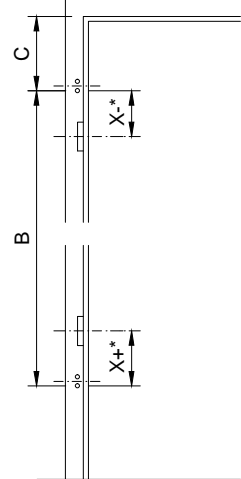
**Objektband**



**Bandtasche V8600/8610**

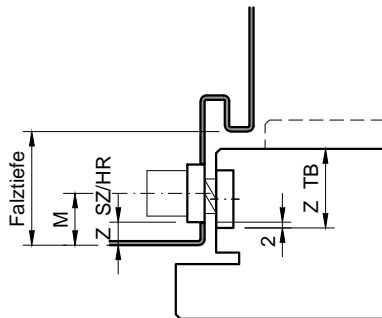


**HR 16-3, 18-3**



$X = D\text{-Mass} / 2$  (immer ab Mitte Bandaufnahme)

\*16mm, bei 16-3  
 21mm, bei 18-3



	Falztiefe	Mass M
TT HR	< 40	15
	ab 40	18
KZA Kellerzargen	bis 38	15
	> 38	18
EAG Elkuch	< 40	15
	ab 40	18

Z-SZ/HR = Mass M - 10

Z-TB = Falztiefe - Dichtung - M + 12