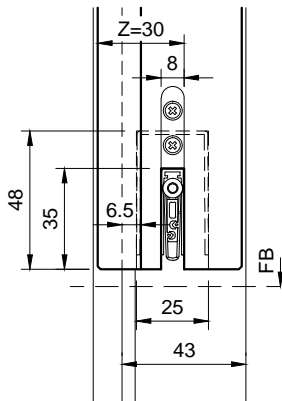
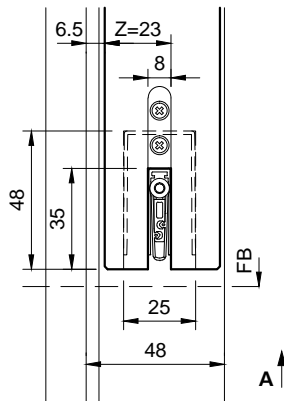


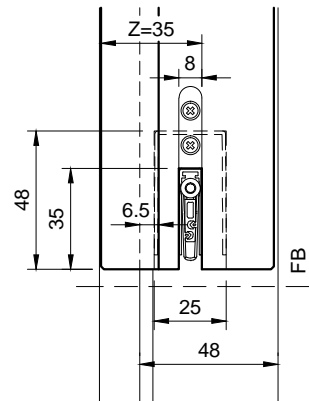
Typ: RDS17-43
 48-51mm Türblatt
 (Zusatzfalz = 15mm)



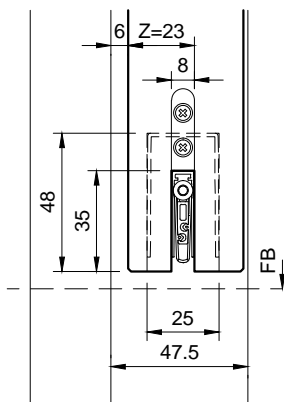
Typ: RDS17-48
 38-41mm Türblatt



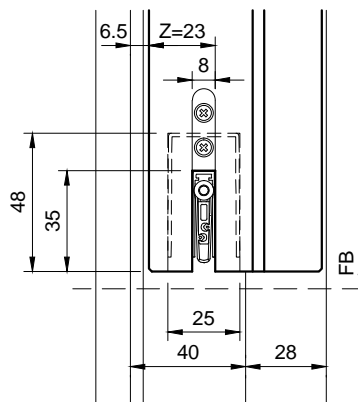
Typ: RDS17-48
 58-61mm Türblatt
 (Zusatzfalz = 20mm)



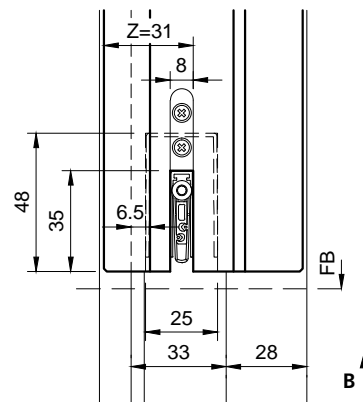
Typ: BFDS47
 39-42mm Türblatt



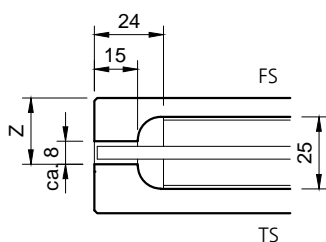
Typ: RDS17-28/40H,F
 58-61mm Türblatt



Typ: RDS14-28/33H,F
 68-72mm Türblatt
 (Zusatzfalz = 16mm)



Ansicht von unten
 (Beispiel A)



Ansicht von unten
 (Beispiel B)

